



Australian Government

Tertiary Education Quality and Standards Agency

Online and blended learning enrolments in Australian higher education

Quality Assurance of Online Learning Forum

Dr Lin Martin
TEQSA Commissioner
27 November 2018

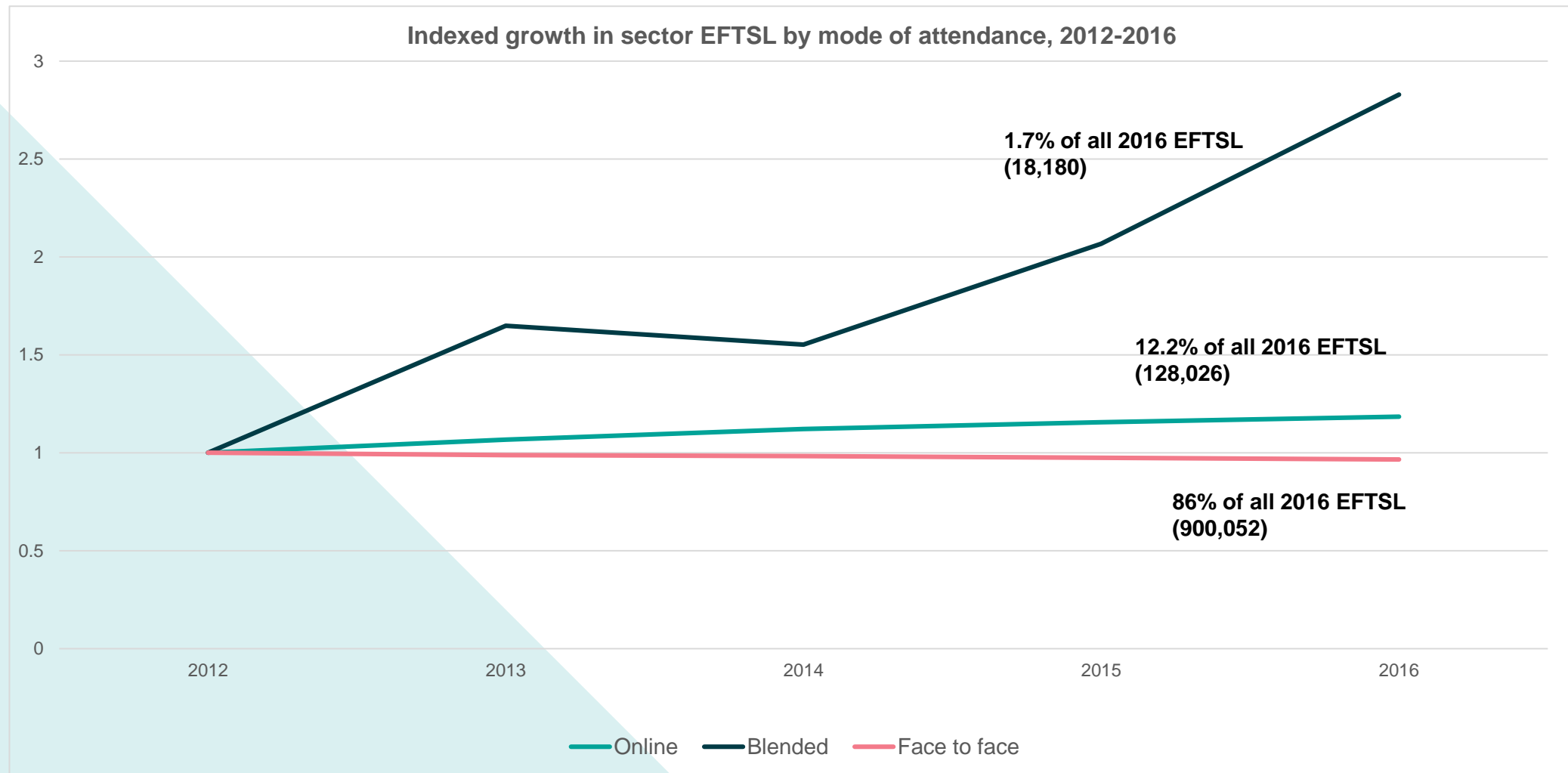
TEQSA



Nature of online enrolment data

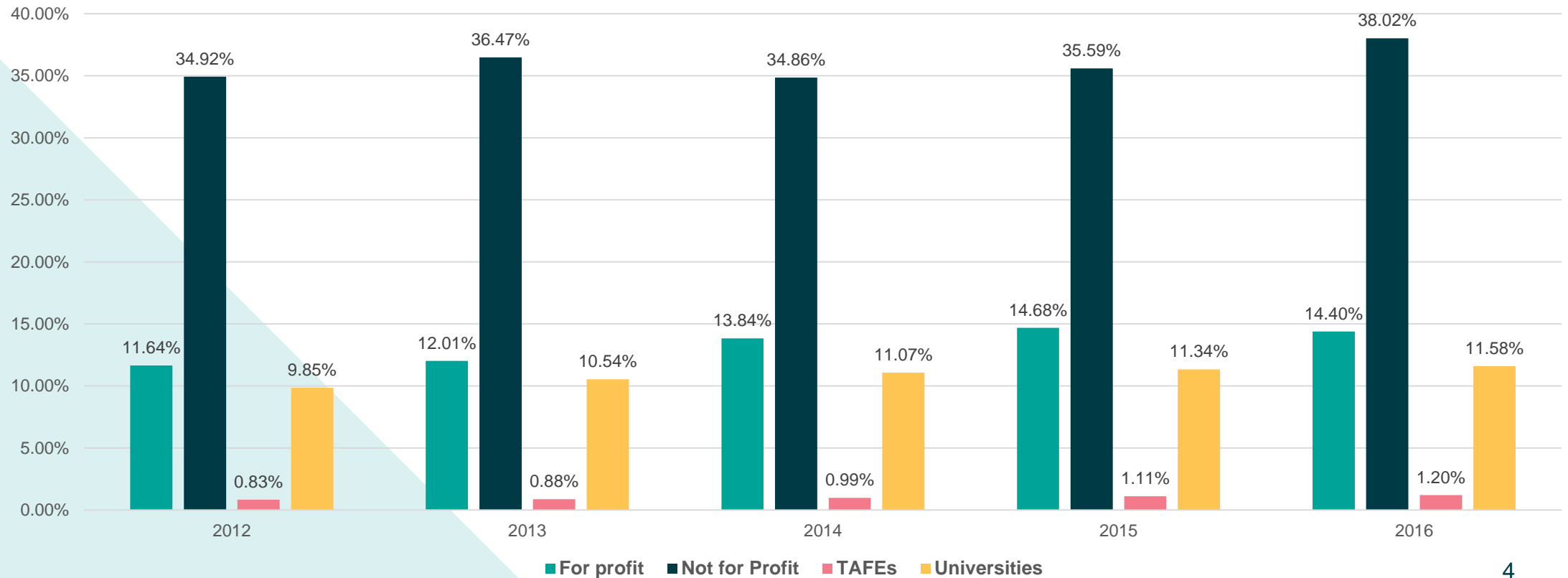
- Collected at the student level (not course or unit of study)
- Data element in Department of Education student statistics collection – mode of attendance
- Three possible values:
- *Labels* *Surrogates for*
 - internal face to face
 - flexible blended
 - external fully online
- Collection does not give a true picture of online enrolments
- Given the increased emphasis on IT enabled learning, should the nature of the collection be changed?

Growth in sector EFTSL by mode of attendance



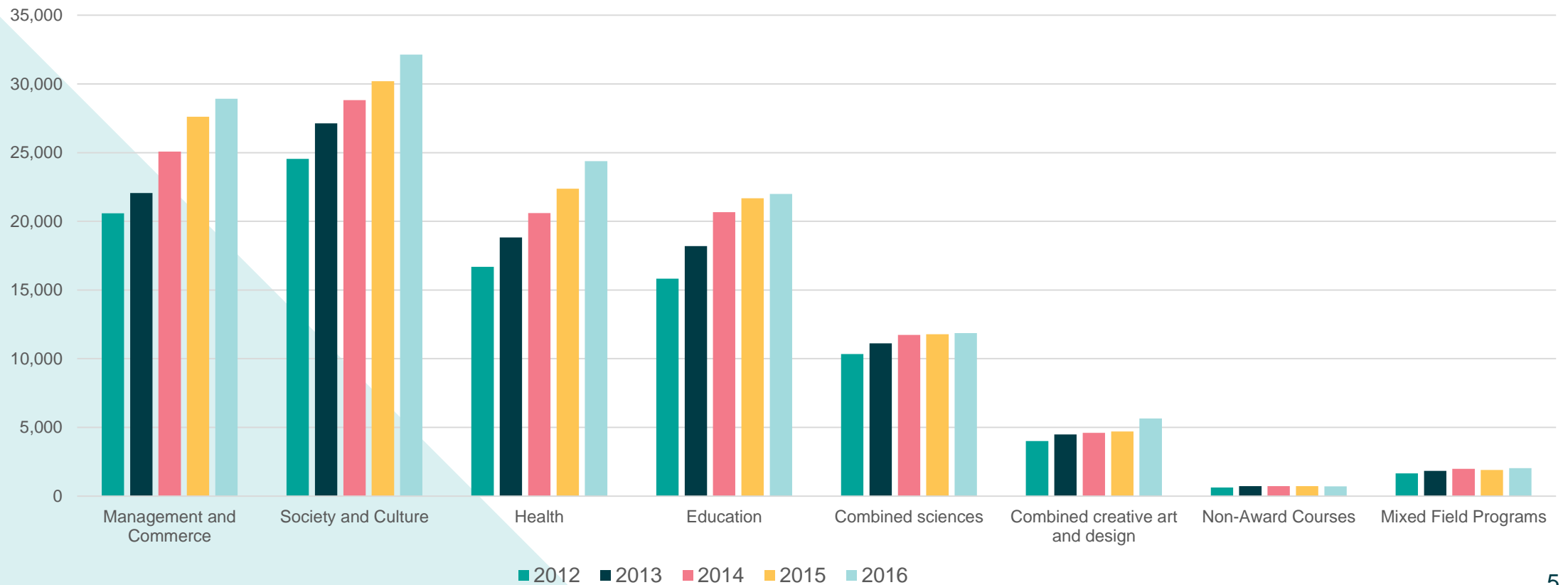
Which type of provider enrolls the greatest percentage of online students?

Percentage of online EFTSL by type of provider, 2012-2016



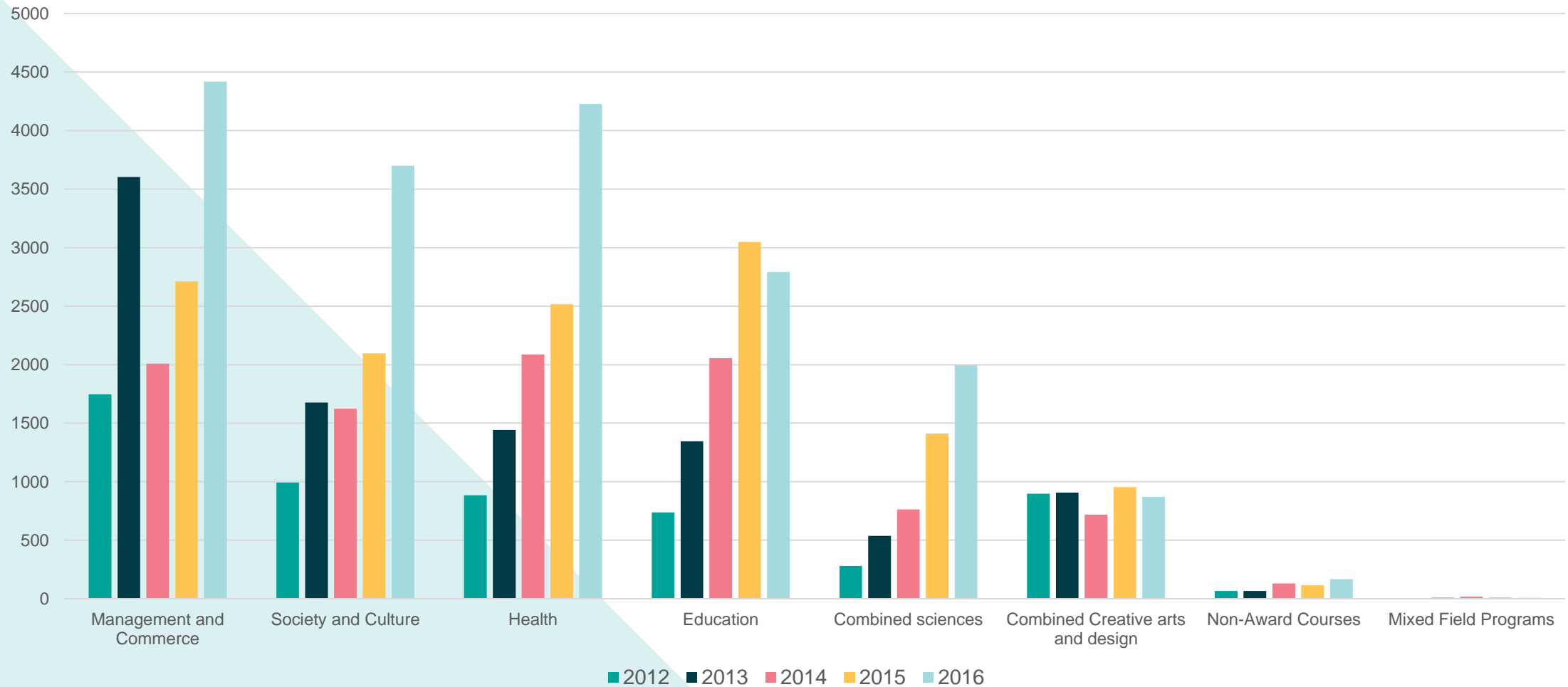
Which fields of education attract the most online enrolments?

Distribution of online EFTSL by field of education, 2012-16



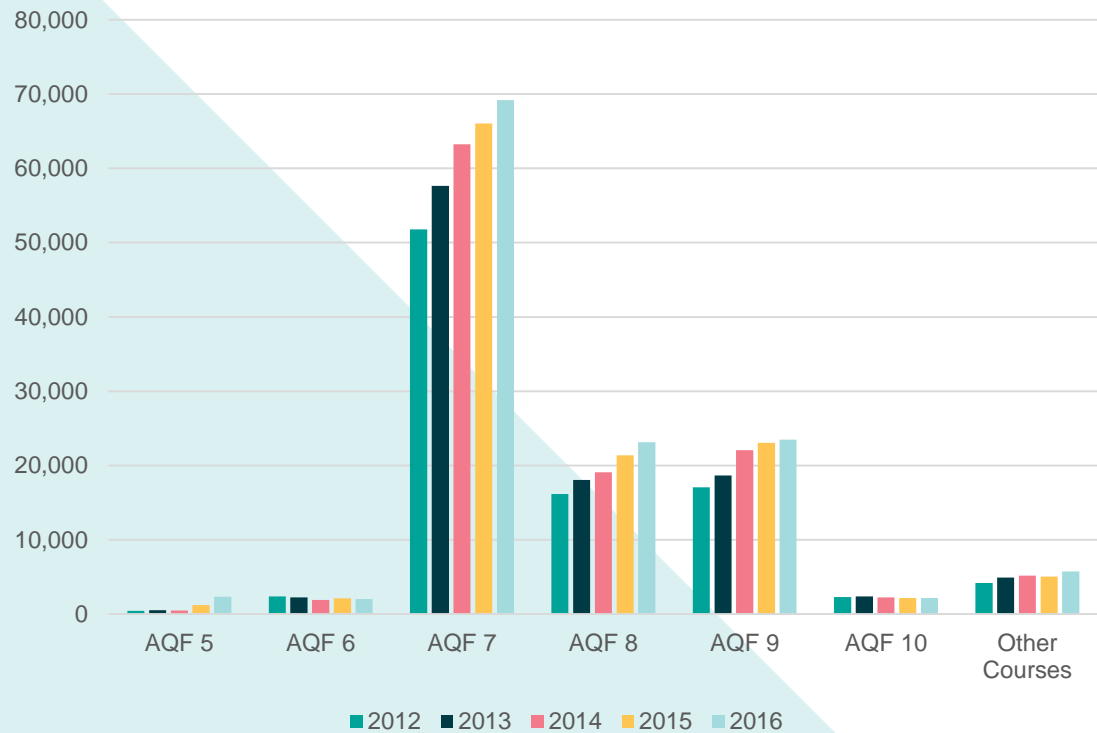
Is this a different pattern from blended enrolments?

Distribution of blended EFTSL by field of education, 2012-16

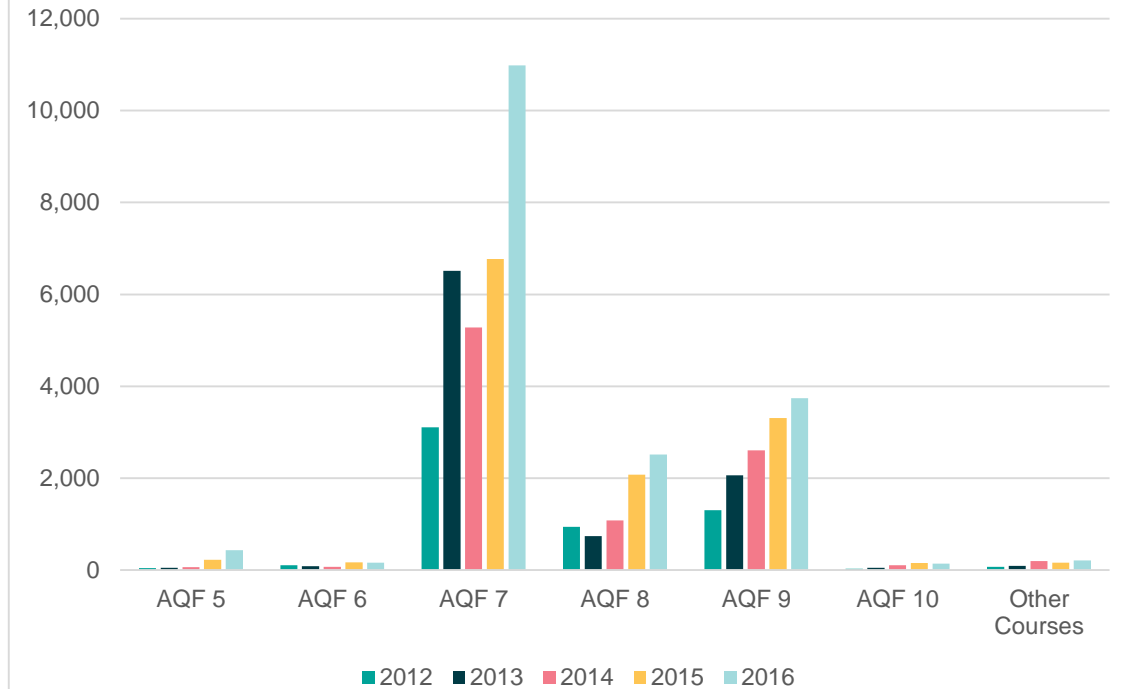


Levels of study of online and blended EFTSL

Online EFTSL by AQF level, 2012-2016

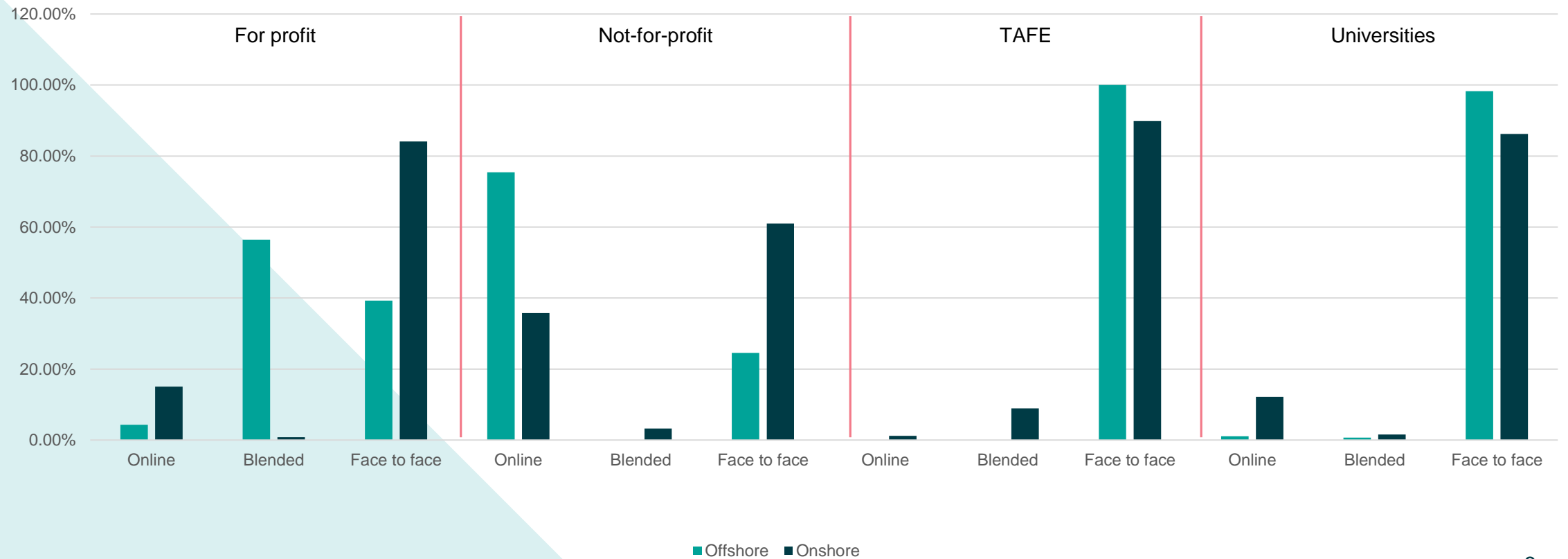


Blended EFTSL by AQF level, 2012-16



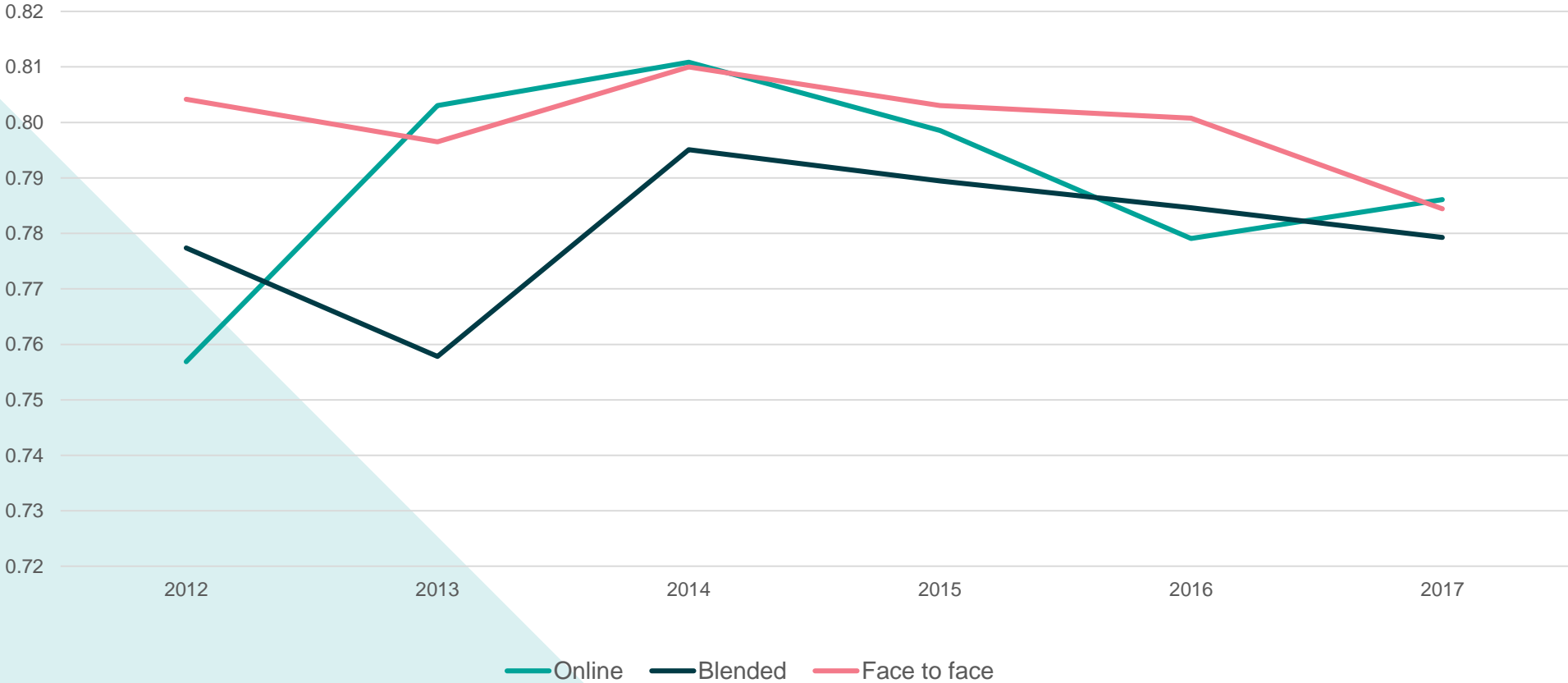
Are online students mainly onshore?

Proportions of onshore and offshore EFTSL by type of provider and mode of attendance, 2016



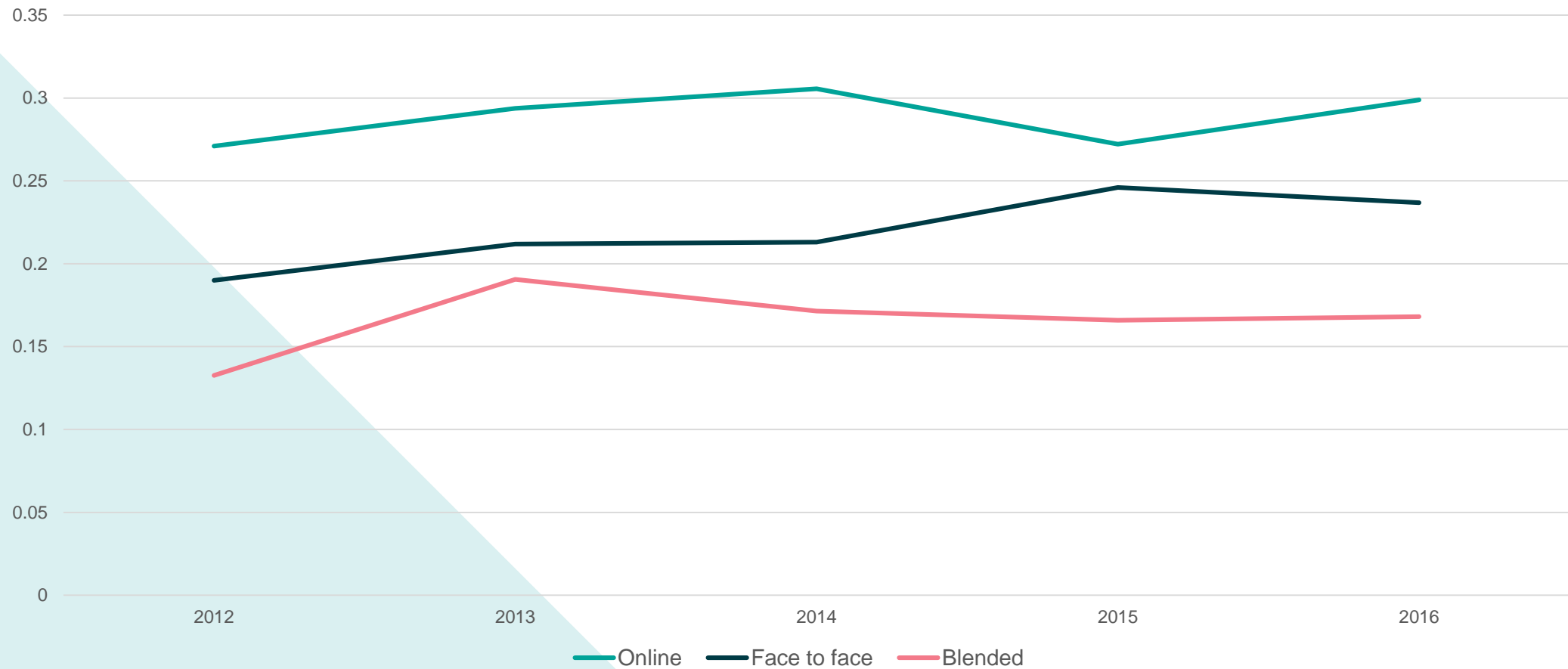
Student satisfaction scores by mode of attendance

QILT median satisfaction level by mode of attendance, 2012-2017



Is attrition worse for online students?

Average adjusted attrition rates by mode of attendance, 2012-2016





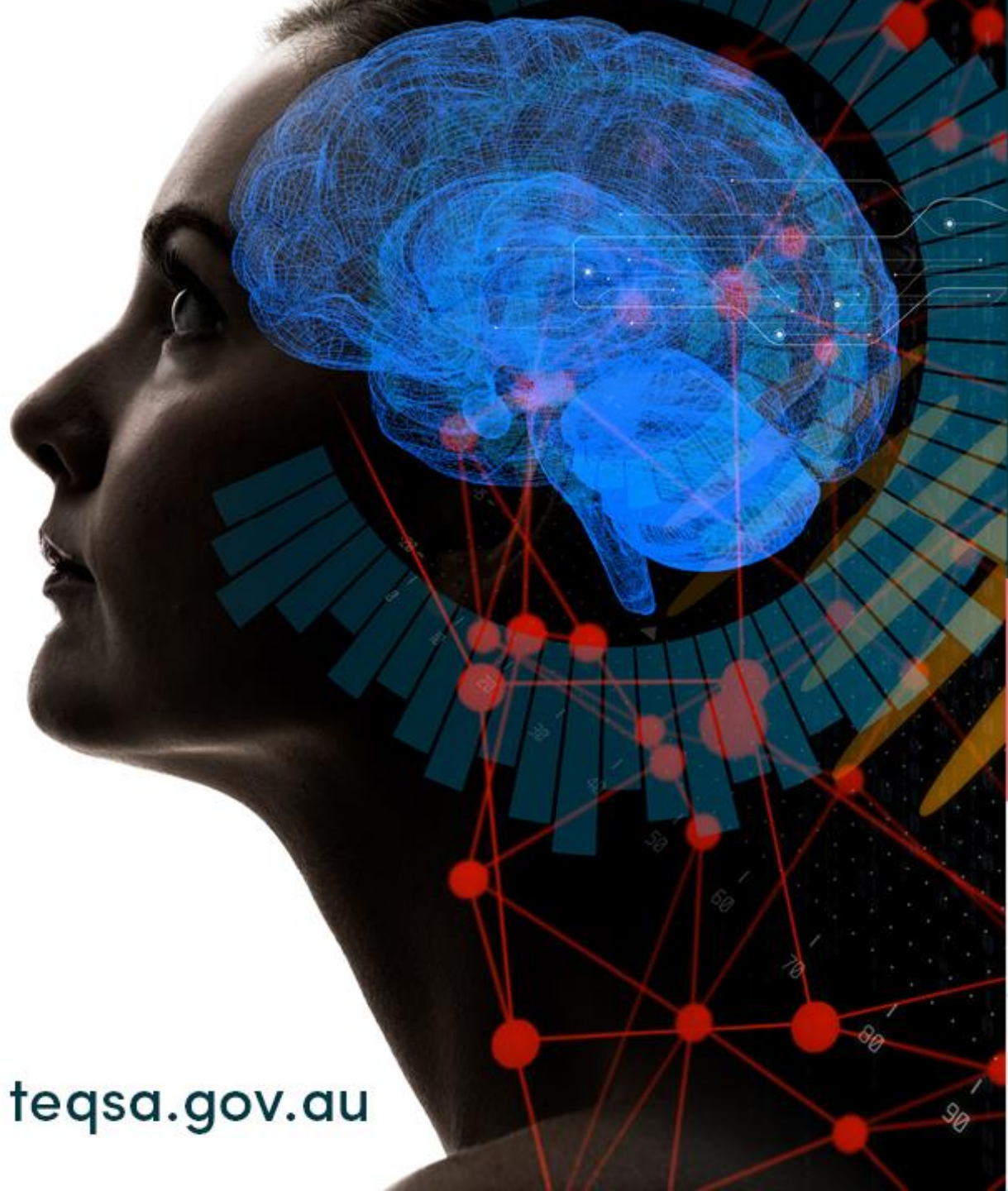
Confirmations and surprises

Confirmations

- Large relative growth in online and blended study in last five years
- Most online enrolments are in bachelor degree courses, followed by Masters by coursework
- Online students have higher attrition rates than other groups

Surprises

- Society and Culture one of the largest fields for online study
- Several fields of study have large numbers of online students
- Not for profit providers enrol greatest proportion of online enrolments
- Converging levels of student satisfaction by mode of attendance over time
- Blended enrolments have lower attrition rates than internal students



teqsa.gov.au

TEQSA

Third Annual TEQSA Conference

Innovation, Excellence, Diversity

28–30 November 2018
Melbourne